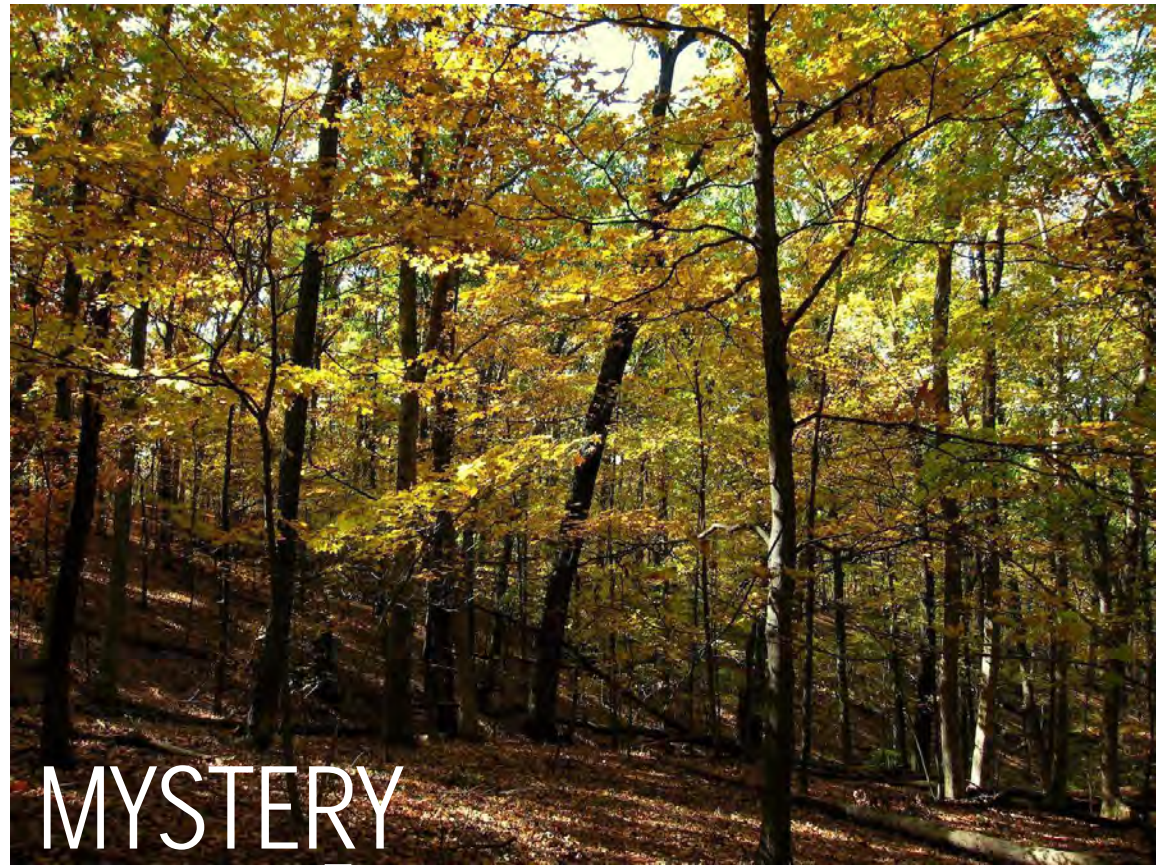


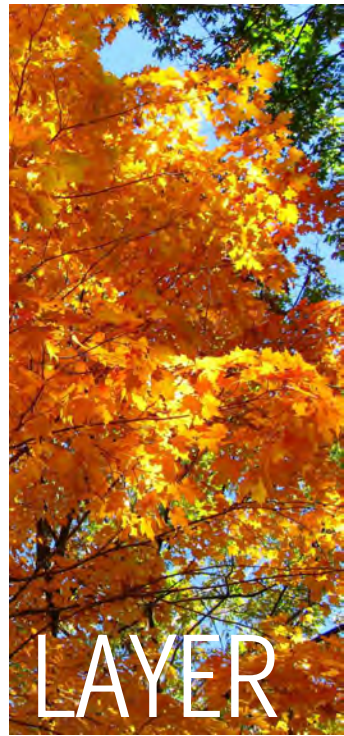
EDGE



MYSTERY



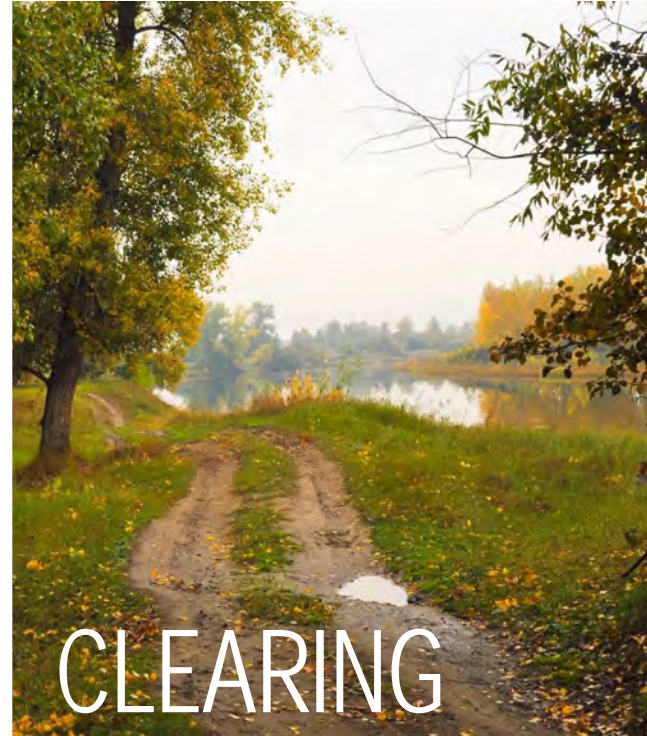
DISCOVERY



LAYER



PATH



CLEARING



FILTER



CHANGE

MGCC RENOVATION AND EXPANSION QUALITY STUDY

FEBRUARY 20, 2024 | JLG 23061 | © 2023 JLG ARCHITECTS



DESIGN FOR LIFE

CURRENT DESIGN CONCEPT - 12/4/23

- Introduction of light monitors
- Refinement and reduction of vertical fins



MGCC RENOVATION AND EXPANSION

DESIGN PROCESS

FEBRUARY 20, 2024 | JLG 23061 | © 2023 JLG ARCHITECTS

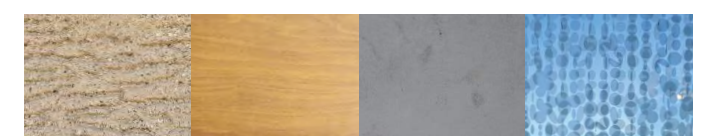
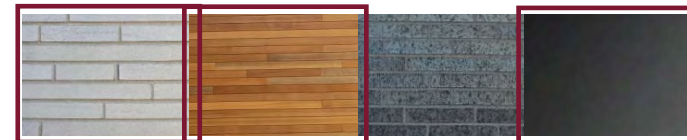
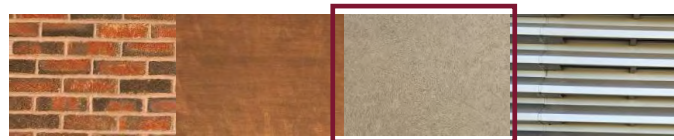


GOVERNMENT CENTER

HENNEPIN COUNTY LIBRARY

CENTRAL PARK

TOWN GREEN



MGCC RENOVATION AND EXPANSION

EXISTING MATERIAL PALETTE

FEBRUARY 20, 2024 | JLG 23061 | © 2023 JLG ARCHITECTS



DESIGN FOR LIFE



MGCC RENOVATION AND EXPANSION

EXTERIOR VIEW 1

FEBRUARY 20, 2024 | JLG 23061 | © 2023 JLG ARCHITECTS



DESIGN FOR LIFE



MGCC RENOVATION AND EXPANSION

EXTERIOR VIEW 2

FEBRUARY 20, 2024 | JLG 23061 | © 2023 JLG ARCHITECTS



DESIGN FOR LIFE



MGCC RENOVATION AND EXPANSION

EXTERIOR VIEW 3

FEBRUARY 20, 2024 | JLG 23061 | © 2023 JLG ARCHITECTS



DESIGN FOR LIFE



MGCC RENOVATION AND EXPANSION

EXTERIOR VIEW 4

FEBRUARY 20, 2024 | JLG 23061 | © 2023 JLG ARCHITECTS



DESIGN FOR LIFE



MGCC RENOVATION AND EXPANSION

INTERIOR VIEW 1

FEBRUARY 20, 2024 | JLG 23061 | © 2023 JLG ARCHITECTS



DESIGN FOR LIFE



MGCC RENOVATION AND EXPANSION

INTERIOR VIEW 2

FEBRUARY 20, 2024 | JLG 23061 | © 2023 JLG ARCHITECTS



DESIGN FOR LIFE